

FACTS

INTERESTING FACTS ABOUT SANDPAPER

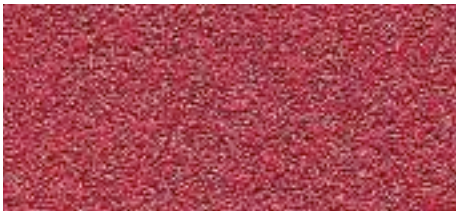
ALUMINUM OXIDE

Usually brown. Very tough, Block shaped grit which fragments under heat and pressure. This friability is desirable, because it exposes new sharp cutting edges. It is the best all-purpose wood working abrasive.



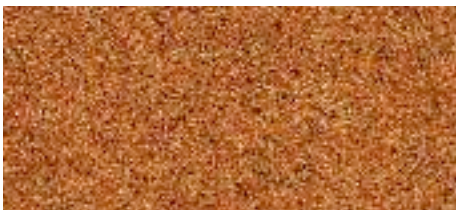
CERAMICS

Usually pink (Norton® "SG™") or gray (Carborundum® "Medalist™"). It is even harder and more durable than Alumina Zirconia and more expensive. Favored by metal workers.



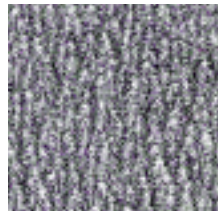
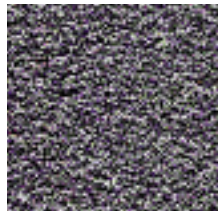
GARNET

Orange, natural mineral mined mostly in the USA. The abrasive of choice for wood before A.O. became more popular. Block shaped like A.O. but softer. Fragments and dulls faster than AO. Well suited for final sanding of wood, because its softer cut produces the smoothest finish of all abrasives. Garnet tends to close off the wood pores, which makes stains penetrate more evenly.



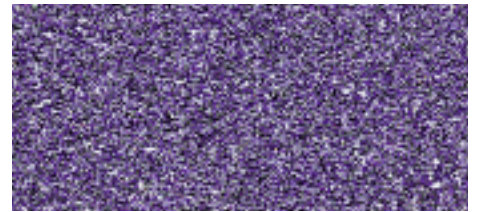
SILICON CARBIDE

Shiny black or grayish/white when treated with zinc stearate (like soap) which reduces clogging. Harder, sharper, and more friable than A.O. It fragments quickly thus reducing the potential for loading and exposing new sharp edges. Commonly used on hard materials like glass or metal. Knife makers use fine S.C. belts for sharpening. Auto body shops use fine, black, waterproof S.C. sheets for wet sanding between coats. Wood workers use white, no-load sheets for fine finishing.



ALUMINA ZIRCONIA

Usually blue, sometimes green or red. It is a combination of Zirconia and A.O. Zirconia is two steps removed from the hardness of Diamond. It requires extreme pressure to fracture the grain; therefore, it is combined with A.O. to increase fragmentation. It maintains a sharp cutting edge and is expensive. Ideal for hogging off wood rapidly or for thickness planing. Knife makers, the shoe industry, metal workers all appreciate A.Z. for its longevity on hard materials.



ABRASIVE GRADE COMPARISON

US ANSI/CAMI	EUROPEAN FEPA	JAPAN	MICRO FILM
220(66.00)	P220(65.00)	240(80.50)	
240(57.75)	P240(58.50)	280(67.75)	
280(42.00)	P280(52.80)	320(57.25)	
320(34.25)	P320(46.20)	360(48.25)	
360(27.30)	P360(40.50)	400(40.50)	40 MIC
400(22.10)	P400(35.00)	500(34.00)	30 MIC
500(18.20)	P500(30.20)	600(28.50)	
600(14.50)	P600(25.75)	700(24.00)	
800(11.05)	P800(21.80)	800(20.00)	20 MIC
1000(8.95)	P1000(18.30)	1000(20.00)	15 MIC
1200(5.5)	P1200(15.30)	1200(13.00)	
		1500(10.20)	
		2000(8.00)	9 MIC
		2500(6.50)	
		3000(5.30)	



ALUMINUM OXIDE PORTABLE BELTS



STROKE SANDER BELTS